

Android: Device Configuration

Desenvolvimento de Software e Sistemas Móveis (DSSMV)

Licenciatura em Engenharia de Telecomunicações e Informática

LETI/ISEP

2025/26

Paulo Baltarejo Sousa and Carlos Filipe Freitas

`{pbs,caf}@isep.ipp.pt`

Disclaimer

Material and Slides

Some of the material/slides are adapted from various:

- Presentations found on the internet;
- Books;
- Web sites;
- ...

Outline

- 1 **Configure Android device for debug**
- 2 **Bibliography**

Configure Android device for debug

Configuration Overview

- In a nutshell to use a real device for test implies the following:
 - Have a Android device and a USB data cable!
 - Activate developer options on the Android device.
 - Activate debugging option on the Android device.
 - Connect Android device to the computer through the usb data cable.
 - Install adb driver for your device.
 - Test your applications

Disclaimer

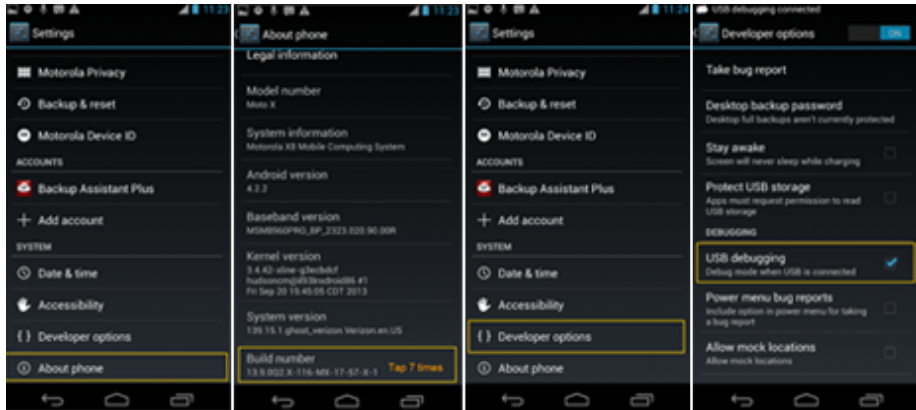
This is a simple version of:

<https://developer.android.com/studio/run/device.html>

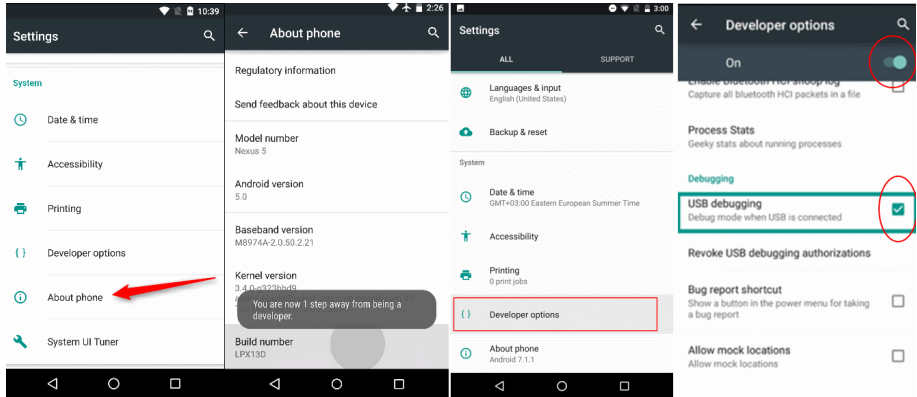
Enable developer options

- On **Android 4.1 and lower**, the Developer options screen **is available by default**.
- On **Android 4.2 and higher**, you must enable this screen as follows:
 - Open the Settings app.
 - Scroll to the bottom and select About phone.
 - Scroll to the bottom and tap Build number 7 times.
 - Return to the previous screen to find Developer options near the bottom.

Enable developer options (2) - Android 4



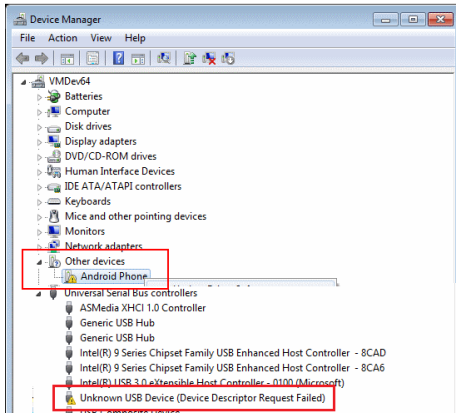
Enable developer options (2) - Android > 5



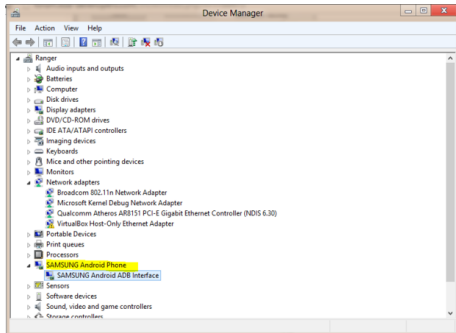
Connect your device to PC

- Connect your Android device to your computer's USB port.
- Right click on windows logo and open Device manager.
- One of two things can happen:

Your device is not recognized:



Or your device is recognized!



In this case you are ready too go!

Install adb driver for your device in windows

- First, find the appropriate driver for your device from the **OEM drivers table** available in:

<https://developer.android.com/studio/run/oem-usb.html#Drivers>

- Once **you've downloaded** your USB driver, install it or extract it if it is a zip.
- Then follow the following instructions to install or upgrade the driver on Windows 10.

Install adb driver for your device in windows (2)

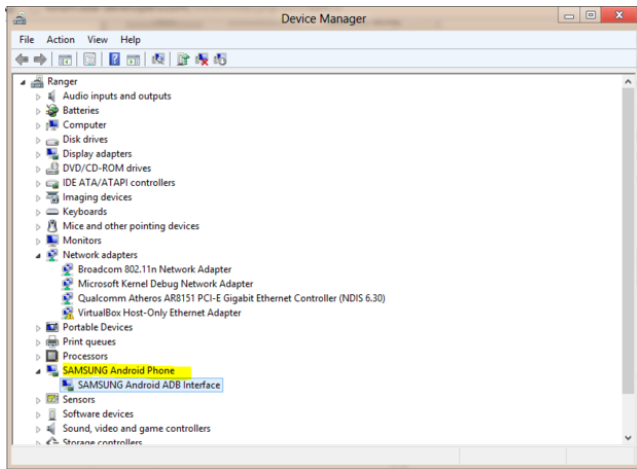
- Connect your Android device to your computer's USB port.
- Right click on windows logo and open **Device manager**.
- In the Device Manager right pane, locate and expand Portable Devices.
- In Portable Devices, right-click the name of the device you connected, and then select Update Driver Software.
- If your driver has an installation try the automatic way.
- If not, then in the Hardware Update wizard, select "Browse my computer for driver software" and click Next.
- Click Browse and then locate the USB driver folder where you extracted or installed the drivers.

For example, the Google USB Driver is located in `android_sdk/extras/google/usb_driver/` .

- Click Next to install the driver.

Install adb driver for your device in windows (3)

- After that you should have something look like this:



In this case you are ready too go!

Bibliography

Resources

- "Mastering Android Application Development", by Antonio Pachon Rui, 2015
- <https://developer.android.com/index.html>
- <http://simple.sourceforge.net/home.php>
<http://simple.sourceforge.net/download/stream/doc/tutorial/tutorial.php>